

NEWSLETTER



Editor's Note: The newsletter will be distributed electronically to all members for whom we have an email address. If you wish to switch from paper to electronic delivery, please notify me at robert.lucas@usask.ca.

Future Meeting Dates:

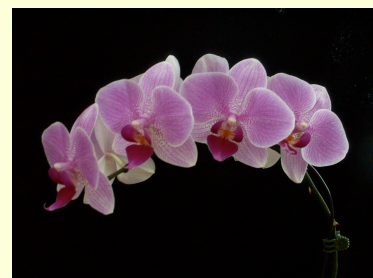
March 17, 2013 April 28, 2013 May 26, 2013

SOS Executive

President:	Cal Carter
Vice-President:	
Past President:	Sherida Gregoire
Secretary:	Jennifer Burgess
Treasurer:	Cheryl Grummett
Social:	Shirley Keith Lori Pozniak
Plant Orders:	Heather Anderson Cheryl Adamson
Resources:	Yvette Lyster Pat Randall
Librarians:	Tracey Thue Jan Dougall
Newsletter:	Bob Lucas
COC/AOS Rep:	Eugene Kucey
Speakers:	Don Keith
Webmaster:	Jennifer Burgess
Mail Address:	SOS, Box 411 Saskatoon, SK S7K 3L3
Web Address:	www.saskorchids.com

February Meeting

The February general meeting of the Society will be held on **Feb. 17, 2013** at John Dolan School, commencing at 1:30 p.m.



ANNOUNCEMENTS

The February meeting will be held on February 17 to avoid a conflict with the OSA Show in Edmonton the following weekend.

As we do not have a visiting lecturer at the February meeting, members are encouraged to bring their own divisions for the sale table.

Orchid Fair, the Orchid Society of Alberta's Annual Show and Sale, will take place Friday to Sunday, February 22 to 24, 2013 at Grant MacEwan College South Campus, 7319-29 Avenue, Edmonton. The show will feature spectacular orchid displays, orchid vendors from Canada, the United States and Asia, and free seminars on orchid growing and related topics. For more information, email info@orchidsalberta.com or check the OSA website: www.oehidsalberta.com

The SOS will be entering a display at the OSA Show. Please contribute to the display by dropping your blooming plants off at Tracey's home, 1225 14th Street E. on Wednesday, February 20 between 5:00 and 7:00 p. m. **Please use the back door.** Be sure to stake your plants and identify them in a way to ensure they are returned to you. It would also help to have a list of your plants for registration. You may pick up your plants at Don and Shirley Keith's, 311 Beechdale Cres., on Monday, February 25 between 4:00 and 6:00.

The February meeting will feature a raffle of plants donated by Safeway. Be sure to purchase your tickets from Tracey or Jan at the

Library table, \$1 for one, \$2 for three.

The Society will be entering a display at Gardenscape to be held on March 22-24, 2013. We will need volunteers to help with the display and to serve as ambassadors during the event. A signup sheet will be at the front table at the February meeting. Further details about plant drop off and pick up will be provided at the February meeting. To avoid conflict with Gardenscape, the March general meeting of the Society will be held on March 17.

The Victoria Orchid Society AOS sanctioned Spring Show and Sale will be held March 1-3, 2013 at the Students Union Building, Finnerty Road, University of Victoria. Further details are available from the editor.

Meeting Agenda

Announcements

Problem Corner

Show and Tell

Coffee/Supplies

Cal Carter Presentation

Plant Raffle

Plant Sale

Adjournment



Phal Bedford Golden Victory

JAN. 27 MINUTES

Announcements

Cal opened the meeting by extending a welcome to returning members, new members and guests.

Gardenscape is coming up in March. The SOS' display will be in the main hall this year. Volunteer lists are at the front table – shifts are 2 or 3 hours in length. Dutch Growers is setting up a 10' X 20' "orchid garden" at Gardenscape, which SOS volunteers will help to set up.

Safeway has donated many Phalaenopsis and a few Dendrobiums for the raffle.

Thank you to Heather Drysdale, Gwen Erickson and Jamie Bruce for supplying treats for the break.

The supply table has clear pots, Superthrive and KLN available along with other items.

Cal gave a call for nominations for the COC/AOS representative position on the SOS executive. Cal indicated that Eugene Kucey has agreed to let his name stand for the position. Moved (Cal Carter, Lynn Campbell) that Eugene Kucey be nominated for COC/AOS rep. As there were no further nominations from the floor, this motion was acclaimed.

The Edmonton show will take place February 22nd to 24th. Tracey Thue will be collecting blooming plants at her home on the Wednesday prior, from 5:00 - 7:00 p. m. Don Keith will have plants available for pick-up on the Monday evening following the show at his home between 4:00 and 6:00 p.m.

Plant orders will be due tomorrow (January 28th)- see the January newsletter for details

Problem Corner

Paphs are growing tightly together – how can they be/should they be divided? A plant may be left as a specimen plant, but may be divided if size is an issue or to prevent the center of the plant from dying off. A number of fans should be kept together when dividing.

A mini Phal (unnamed hybrid) has white margins on the leaves – how does this occur? Some Phal species are naturally variegated, and this hybrid likely has one of these species in its parentage.

An Oncidium type plant was brought for identification – It was advised to bring the plant back

when in its in bloom for easier identification.

Cybidium leaves were brought in to identify a pest – it was identified as white scale. Scale can weaken the plant and eventually kill it if left untreated. Scale infestation can be treated with Merit (systemic insecticide available at the supply table), or leaves can be washed with a mixture of isopropyl alcohol and horticultural soap.

A cattleya has a seed pod that has partially broken open – what to do with it? The seeds can be scattered at the base of the parent plant, though they may not germinate as well as with the more laborious process of flasking.

Show and Tell

Plants were shown by Ellen, Mary, Cody, Gabrielle, Yvette,

Heather, Lynn, Jenn, Tracey, Cheryl A., Ruthanne, Sherida, (Don in absentia) and Cal.

Presentation

Cal gave a presentation on top orchid picks for the greenhouse or growing area. A great variety of species and hybrids were shown with photos and growing requirements. The presentation was adapted from an Orchid Digest powerpoint.

Plant Raffle

There were more than 30 Phalaenopsis that were donated by Safeway.

Plant sale

There were 24 plants of various genera and most sold.

Adjournment

The meeting adjourned at 3:30

SOS JANUARY SHOW AND TELL TABLE



Blc. (Chia Lin x Mongkol Delight) Exhibitor:
Cal Carter



Paph. Haur Jih Happy Exhibitor: Cheryl Adamson



Bulb. carunculatum Exhibitor: Don Keith



Phrag. besseae Exhibitor: Heather Anderson



Paph. malipoense Exhibitor: Cal Carter



Paph. Fairburn x Vale Grande Exhibitor: Mary Orchard



Paph. gratrixianum Exhibitor: Tracy Thue



Phal. Lowland Juwel Exhibitor: Lynn Campbell



Phal. amboinenses Exhibitor: Cody Hamilton



Paph. Iko Iko Exhibitor: Ellen Ross



Vanda Prao Sky Blue Exhibitor: Sherida Gregoire

HUNTING ORCHIDS IN THE KAMIRANZOVU SWAMP AT NYUNGWE NATIONAL PARK, RWANDA BY TRACEY THUE

In February 2012 my husband and I visited my parents who live and work in Kigali, Rwanda. Living in Jasper National Park as a child, and now in my adult years growing orchids, I was particularly interested in exploring the parks of Rwanda. My parents own a Mitsubishi Pugerio; it carried us faithfully over rough roads and smooth, up, down and through the spectacular mountainous terrain of this country.

During our stay we visited Nyungwe National Park, protecting a montane forest that is part of three isolated mountain ranges of central Africa. Nyungwe Forest and the neighboring Cyamudongo Forest became a National Park in 2004, thereby protecting 1000 square km from logging and conversion to agriculture. Nyungwe is famous for its diversity in fauna, including 13 species of primates and 285 species of birds. It is also home to 56 endemic flowering plant species, including *Impatiens nyungwensis*, named for the forest in which it grows.

We set off from Kigali, the capital city of Rwanda, and drove south west to Nyungwe (pronounced ni-ung-we) National Park. The landscape changed suddenly from low-lying fields of rice and grass, and slopes cultivated with potato (called "Irish" by the Rwandans), tea, maize, banana (called "matoke"), and eucalyptus to pristine rainforest! We stayed overnight at Gisakura Guest House, in the middle of the park

where the main information centre is located. It is also the meeting point for many guided walks. The mountain park was cool and rainy while we were there, with temperatures between 10 - 15°C. While waiting for supper - a delicious spiced beef and rice dish - we saw Regal Sunbirds feeding on the nectar produced by flowering shrubs all around the grounds pictured below.



Five gentlemen shared the dining room with us, who were visiting the park to see the birds: they each had cameras with telephoto lenses or spotting scopes and well-worn bird books and lists, which they consulted constantly as they enthusiastically discussed what they'd seen that day and what they still hoped to see!

The next morning hubby and I, dressed in quick dry clothing and hiking boots, met our guide Christian at the park office, to hike to the Kamiranzovu swamp. When we saw Christian dressed in rain gear and rubber boots we were a little worried about how wet the walk would be - we're not walking in the swamp are we????!! He assured us we were fine dressed as we were, and we all climbed into the truck to drive to the trail head.



There were also Red-chested Sunbirds and an African Golden breasted Bunting.



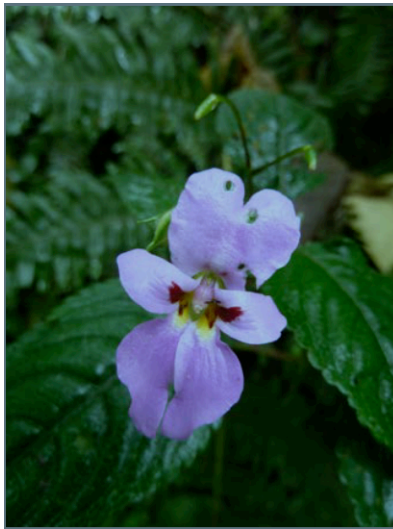
The Kamiranzovu swamp is the largest peat bog in Africa and is known for the number of bird and orchid species to be found there. The swamp was the habitat of the last elephants in Nyungwe. Kamiranzovu means “elephanteater” in Kinyarwanda, referring to the elephants who would venture into the bog to graze, get stuck and die there!



The trail began at an elevation around 2400 m and led down through the montane forest of towering trees, flowering shrubs, magnificent tree ferns, terrestrial ferns (oh the ferns!), lichens, begonia and impatiens. We dropped down to the swamp at about 1900 m elevation and I tried to imagine elephants foraging in and around the forest. The rain polished the vegetation and the birds called out to us as we descended: it was magical. I kept my eyes out for orchids as we moved down through the forest, but all I recognized were multitudes of



begonia, lobelia, geranium and impatiens, lush and glowing beneath the towering trees.



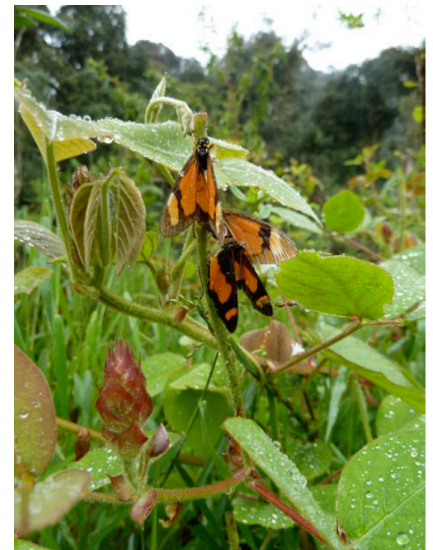
I also saw the recently discovered, brilliant orange-red and yellow *Impatiens nyungwensis*.



Once down to the swamp level, we spotted many plants that were vaguely familiar to us, including raspberries, aster, and what looked like St. John's Wort!



Sheltering from the rain on a climbing vine were gorgeous butterflies looking like big orange and black flowers.



And then I spotted orchids! OK, they were pretty hard to miss - not the small *Cynorkis*, *Polystachya* or *Disperis* that I had

been watching for but huge plants right beside the trail, standing up above the grasses and herbs - ***Eulophia horsfallii***. It was actually a bit difficult to photograph the flowers because they were at the top of a spike taller than me!



The flowers were large, fleshy things of pink, brown and cream and were magnificent.

Eulophia horsfallii is a terrestrial orchid up to 3 m tall and used to be distributed

widely throughout tropical Africa in swamps and open vegetation. Now it is threatened to extinction outside of Nyungwe National Park, due to cultivation of swamp habitats.



Once our excitement subsided and we photographed the plant, we climbed back up to the road and drove to the visitor center at Uwinka Overlook.

This was to be the starting point

of our next adventure - the suspension bridge walk! But lunch first, and a study of the field guide to confirm our sightings of plants and birds.....



Editor's Note: Tracey Thue is an accomplished orchid hobbyist and member of the Saskatchewan Orchid Society. When she is not tending her orchids, she can be found working at VIDO, UofS as a Biosafety Officer.